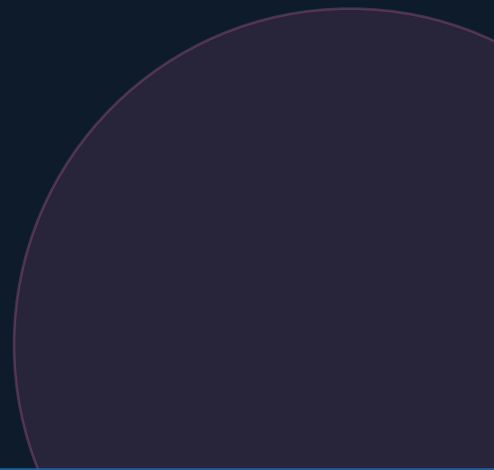
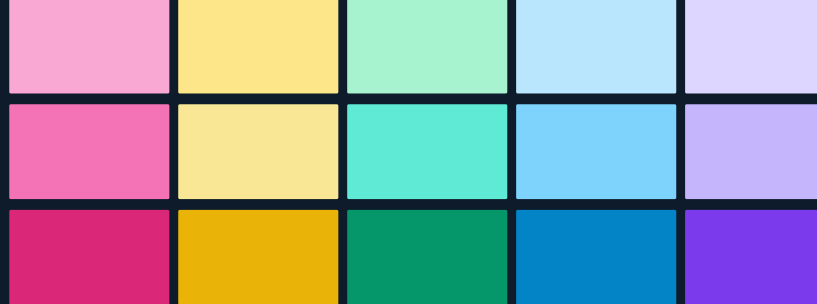


MODULE 5

# Tips & Tricks for Working with Colour

Swatches, Recolour Artwork, Adobe Color, and color management



# Concepts at a Glance

Every tool and concept introduced in this activity



## Swatches Panel

Store, edit, and apply named colours to artwork. Window → Swatches.



## Global Color

A swatch option that updates all artwork using that colour when the swatch is edited.



## Swatch Libraries

Pre-built color collections. Access via the button at the bottom of the Swatches panel.



## Recolor Artwork

Interactively experiment with and apply colour themes to selected objects.



## Adobe Color

[color.adobe.com](https://color.adobe.com) — browse, build, and import color themes into Illustrator.

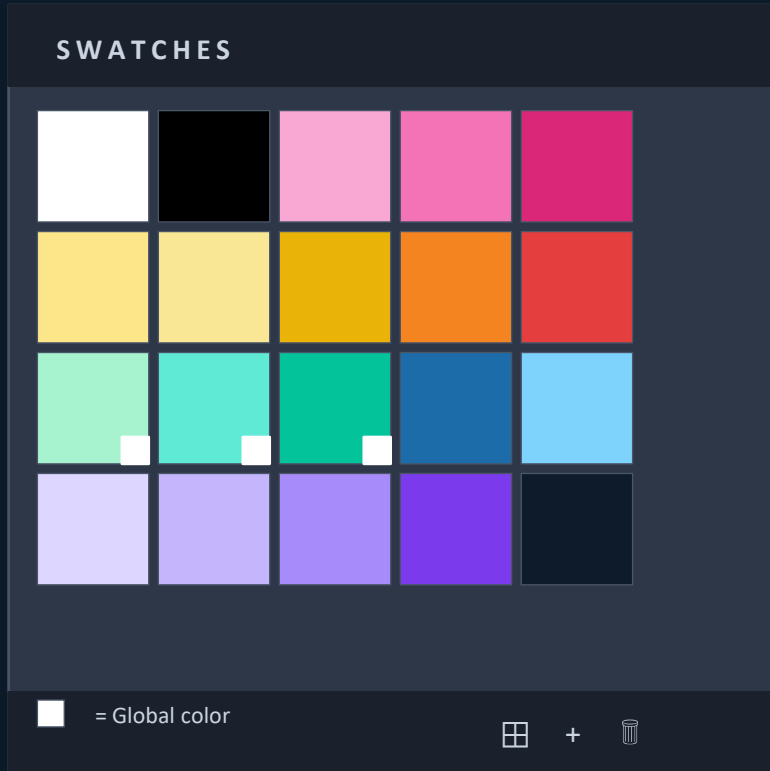


## ASE File

Adobe Swatch Exchange — a portable file format for sharing color palettes between Adobe apps.

# Swatches Panel

Window → Swatches · Your home base for all colors in a document



## Edit a Swatch

Double-click any swatch to open Swatch Options. Change the name, colour values, or hex code.

## Create a New Swatch

Select a swatch and click the + button at the bottom of the panel. Configure color, name, and enable Global.

## View Options

Use the panel menu (⋮) to switch between small/large thumbnail view or list view for better visibility.

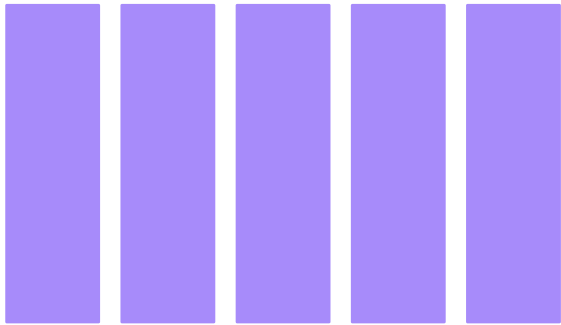
## Global Color Indicator

A small white triangle in the corner of a swatch means it's a global color — changes update all linked artwork.

# Global Colors

Enable Global when creating a swatch — update one swatch, update all linked artwork instantly

## WITHOUT GLOBAL

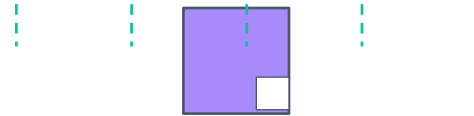
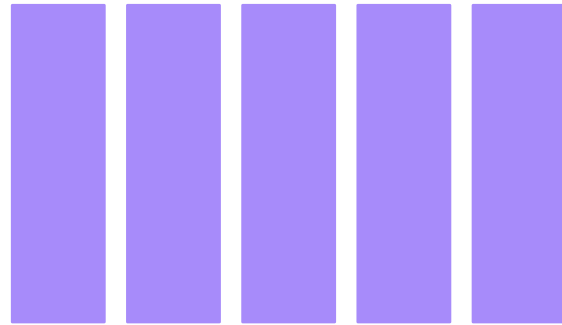


Change color wanted →



Must select & change EACH object individually

## WITH GLOBAL ★



Double-click swatch to change to red



ALL objects update automatically ✓

# Swatch Libraries & ASE Files

Pre-built palettes + portable swatches across Adobe apps

## SWATCH LIBRARIES

Color Books

Default Swatches

Food And Nature

Fun


Gradients

**Kid Stuff** ▶

Nature

Patterns

Skintones

Open via  button at bottom-left of Swatches panel

## ASE FILE · Adobe Swatch Exchange



- Portable color palette format — works across any Adobe app
- Download from Adobe Color as .ase file
- Load via Swatches panel menu → Open Swatch Library → Other Library
- Find the sorbet.ase file in your course downloads
- Click the folder icon to add the palette to your main Swatches panel

*Sorbet palette (included in course files)*

# Adobe Color · color.adobe.com

Browse, build, and import color themes — requires a free Adobe ID

Create

Explore ★

Trends

Accessibility

ocean ×

 Search: ocean



Ocean Theme 1



Ocean Theme 2



Ocean Theme 3



## Add to CC Library

Theme syncs to your Creative Cloud — accessible in Illustrator via Window → Libraries.



## Download ASE

Download a .ase swatch file. Load in Illustrator via Swatches → panel menu → Open Swatch Library → Other Library.



## Copy Hex Code

Hover over any color in the theme — click Copy to grab the hex code for use anywhere.

# Recolor Artwork

Select objects → click the beach ball icon in the Control Panel



Drag color baubles  
around the wheel



## Linked Mode

When the link is enabled, all color baubles maintain their spatial relationship as you drag — great for exploring harmonies.



## Shuffle Colours

Click the shuffle button to randomly redistribute your existing colours to different objects. No new colours — just a new arrangement.



## Saturation & Brightness

Randomize the saturation and brightness of all colors at once, keeping hues consistent while varying the tones.



## Advanced Options

Apply color rules (analogous, complementary, etc.) based on a base color, or adjust globally for temperature, saturation, and brightness.

# Recolor · Advanced Options

Color rules, global adjust, and saving new color groups

## COLOR RULES · Harmony Dropdown

Analogous



Complementary



Monochromatic



Split Compl.



Triad



Colour rule is applied to your base colour, and all artwork updates to match.

## GLOBAL ADJUST · Secret Menu

Temperature



Saturation



Brightness



## SAVE AS NEW COLOR GROUP



Click the '+' icon in Recolour to save the current theme as a new group in your Swatches panel for later use.

# Color = Hue + Saturation + Brightness

The Recolor wheel shows two of these three at a time — use the slider for the third

## HUE

The base color — red, orange, yellow, green, blue, violet



← 360° color wheel spectrum →



Adjust with  
Recolor Artwork

## SATURATION

How vivid or muted the color is



← muted / grey      vivid →



Adjust with  
Recolor Artwork

## BRIGHTNESS

How light or dark the color is



← dark      light →



Adjust with  
Recolor Artwork

# Applying Color & Moving Objects Between Layers

Three ways to apply color + the drag-to-move layer trick

## 1 Click a Swatch



Select the object first, then click a swatch in the panel. The fill or stroke updates instantly.

## 2 Drag & Drop



Deselect everything first, then drag a swatch from the panel and drop it directly onto any object.

## 3 Control Panel



With an object selected, click the Fill swatch in the top Control Panel and pick from the color picker.

## MOVING OBJECTS BETWEEN LAYERS · Layers Panel Dot Trick

1

**Select objects on source layer**

Coloured dot appears on that layer row in Layers panel

2

**Click & drag the coloured dot**

Drag the dot from the current layer row to the destination layer row

3

**Drop on destination layer**

Object moves — bounding box changes to destination layer's colour

★ This is easier than cut/paste — and it keeps the object's exact position on the artboard.

# Module 5 Summary




## Swatches Panel

Edit, create, and apply named colors.  
Enable Global for live updates.



## Swatch Libraries

Pre-built palettes; open via  button in Swatches panel.



## Adobe Color

Browse themes, download ASE, copy hex — at [color.adobe.com](https://color.adobe.com).



## Global Color

One swatch change updates all linked objects instantly.



## Recolor Artwork

Drag baubles, shuffle, randomize saturation/brightness, apply color rules.



## Layer Dot Trick

Drag the selection dot in Layers panel to move objects between layers.